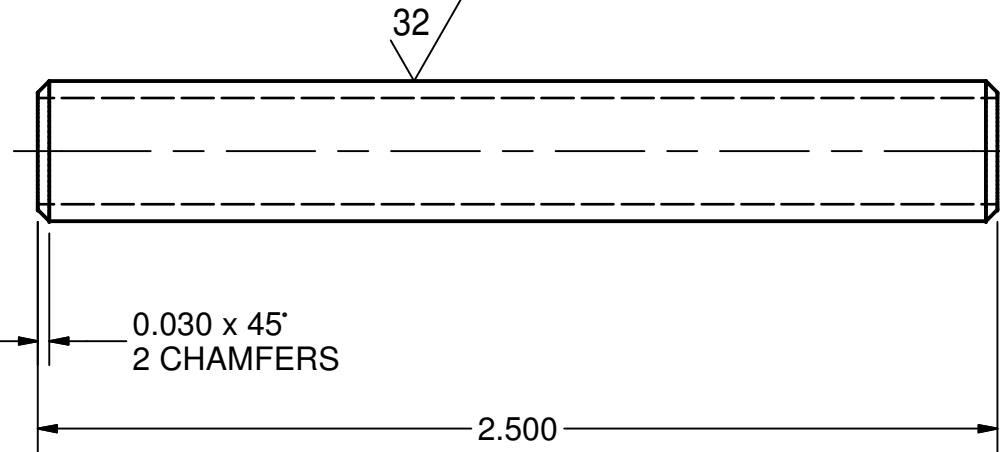
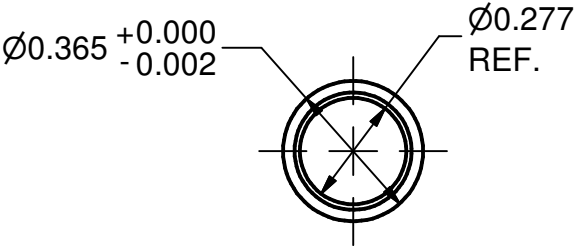
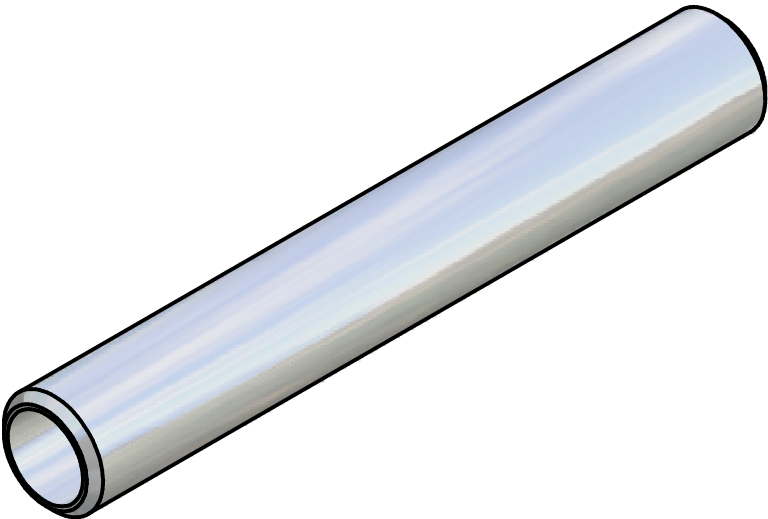

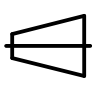




| REVISIONS |      |  |         |      |
|-----------|------|--|---------|------|
| SYM.      | ZONE | DESCRIPTION                              | DATE    | APP. |
| C         |      | Issued all design changes as Rev C (TIO) | 4/19/07 | SAB  |



MATERIAL: 3/8" O.D. 0.49" W 304 STAINLESS STEEL TUBE  
QTY.: 2 PER PROJECT

|   |  | ITEM  | DWG. NO.  | DESCRIPTION      |                   |              | G1           | G2          | G3                | REMARKS   | REV. |
|---|--|---|---|------------------|-------------------|--------------|--------------|-------------|-------------------|-----------|------|
|   |  |   |   |                  |                   |              | QUANTITY     |             |                   |           |      |
| <div>B</div>  | PRINT<br>DISTR.                                      | PLOT DATE: 4/19/2007<br>CAD FILE NAME: 100-471-002.idw  |   |                  |                   |              |              |             |                   |           |      |
|   | <div>100.471.002</div> <div>SH. NO. 1<br/>OF 1</div> | <div>UNLESS OTHERWISE SPECIFIED:</div> <div>DIMENSIONS ARE IN INCHES;<br/>TOLERANCES ON:<br/>    .00 ± .010<br/>    .000 ± .005<br/>FRACTIONS ± 1/64<br/>ANGLES ± 0.5°<br/>ALL SURFACES </div> | <div><div><div>CORNELL UNIVERSITY</div><div></div><div>LABORATORY FOR ELEMENTARY-PARTICLE PHYSICS</div></div><div>CORNELL UNIVERSITY<br/>Floyd R. Newman Laboratory<br/>Ithaca, NY 14853</div></div> |                  |                   |              |              |             |                   |           |      |
|   |  |   | 75 kW CW INPUT COUPLER, LINEAR GUIDE<br>TUBE  |                  |                   |              |              |             |                   |           |      |
| <div>C</div>  | REV.   | CHECKED BY: VGV   | DRAWN BY<br>VM  | DRAWN FOR<br>SAB | DATE<br>1/26/2006 | SCALE<br>2:1 | <div>B</div> | 100.471.002 | SH. NO. 1<br>OF 1 | REV.<br>C |      |
| APPROVED BY: SAB  |  |   |   |                  |                   |              |              |             |                   |           |      |

75 kW CW INPUT COUPLER, LINEAR GUIDE  
TUBE